

# JSPS INTERNATIONAL FELLOWSHIPS for RESEARCH in JAPAN 2022



## JSPS INTERNATIONAL FELLOWSHIPS for RESEARCH in JAPAN 2022

The Japan Society for the Promotion of Science (JSPS) is an independent administrative institution that performs the following main functions:

- Creating Diverse World-Level Knowledge
- Fostering the Next Generation of Researchers to Pioneer Knowledge
- Harnessing University Strengths to Enhance Education and Research Capability
- Building a Robust International Research Base
- Building a Comprehensive Academic Information Analysis Base



### JSPS Fellows Plaza

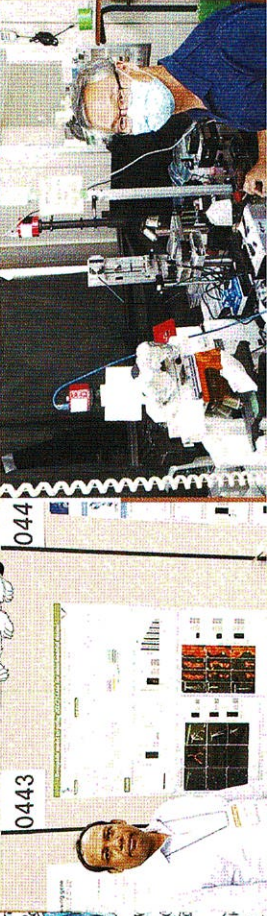
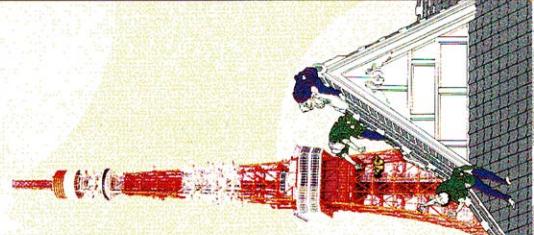
JSPS Fellows Plaza supports JSPS fellows during their research tenure in Japan, and after they have returned to their country through the alumni associations.

<https://www.jsps.go.jp/english/e-plaza/index.html>  
 ☎ +81-3-3263-3444 ✉ fellowsplaza@jps.go.jp

### JSPS Researchers Network (JSPS-Net)

JSPS has launched the JSPS-Net, a social networking service, to support the formation of networks and research communities for both Japanese and international researchers in order to contribute to strengthening, and expanding human networks derived from long years of research exchange between Japan and other countries.

<https://www.jsps-net.jsps.go.jp/>  
 ☎ +81-3-3263-1872 ✉ jpsps-net@jpsps.go.jp







JSPS carries out programs that provide overseas researchers who have an excellent record of research achievements with an opportunity to conduct collaborative research, discussions, and opinion exchanges with researchers in Japan.

## Features

Features 1

We value the pursuit of knowledge above all else. The program is open to all, regardless of nationality or academic field.

Features 2

Tailored to a full spectrum of researchers from early-career researchers to eminent scientists.

Features 3

Flexible durations ranging from short to long-term.



## Science Dialogue

Science Dialogue offers JSPS fellows the unique opportunities to volunteer to give lectures in English on their research work at Japanese high schools in the vicinity of their host institutes.

<https://www.jsp.go.jp/english/e-plaza/e-sdialogue/index.html>  
 +81-3-3263-1730 [sdialogue@jps.go.jp](mailto:sdialogue@jps.go.jp)

## RONPAKU (Dissertation Ph.D.) Program

The RONPAKU (Dissertation Ph. D.) Program supports promising researchers in countries of Asian, and African countries or other specified countries who wish to obtain a Ph. D. degree from a Japanese university through the submission of a dissertation without matriculating a doctoral course.

<https://www.jsp.go.jp/english/e-ronpaku/index.html>  
 +81-3-3263-2368 [ronpaku@jps.go.jp](mailto:ronpaku@jps.go.jp)



countries around the world, allowing them to maintain and expand their networks among themselves and with Japanese colleagues after completing their tenures and returning to their countries. The BRIDGE Fellowship Program provides members of officially established JSPS alumni associations with opportunities to revisit Japan.

[https://www.jsp.go.jp/english/e-plaza/20\\_alumni.html](https://www.jsp.go.jp/english/e-plaza/20_alumni.html) +81-3-3263-1872 [alumni@jps.go.jp](mailto:alumni@jps.go.jp)

## JSPS Overseas Offices

	<b>JSPS Washington Office</b> <b>JSPS San Francisco Office</b>	<a href="https://jpsusa.org">https://jpsusa.org</a> 2001 L Street N.W., Suite 1050, Washington D.C. 20036, USA <a href="http://jpsusa-sf.org">http://jpsusa-sf.org</a> 2001 Addison Street, Suite 260, Berkeley, CA 94704 USA
	<b>JSPS Bonn Office</b>	<a href="https://www.jsp-bonn.de">https://www.jsp-bonn.de</a> Wissenschaftszentrum, Alhrstr. 58, 53175, Bonn, GERMANY
	<b>JSPS London Office</b>	<a href="http://www.jsp.org">http://www.jsp.org</a> 14 Stephenson Way, London, NW1 2HD, UK
	<b>JSPS Stockholm Office</b>	<a href="https://www.jsp-sto.com">https://www.jsp-sto.com</a> Retzius Väg 3, 171 65 Solna, SWEDEN
	<b>JSPS Strasbourg Office</b>	<a href="https://jps.unistra.fr">https://jps.unistra.fr</a> Maison Universitaire France-Japon 42a, avenue de la Forêt-Noire, 67000 Strasbourg, FRANCE
	<b>JSPS Bangkok Office</b>	<a href="https://jps-th.org">https://jps-th.org</a> No.1016/3, 10th Fl., Serm-Mit Tower, 159 Sukhumvit Soi 21, Bangkok 10110, THAILAND
	<b>JSPS Beijing Office</b>	<a href="https://www.jsp.org.cn">https://www.jsp.org.cn</a> A404, China Foreign Language Mansion, No. 89 Xisanhuan Beilu, Haidian District, Beijing 100089, P.R. CHINA
	<b>JSPS Cairo Research Station</b>	<a href="https://jpscairo.com/">https://jpscairo.com/</a> 9 Al-Kamel Muhammad Street, Flat No. 4, Zamalek, Cairo, EGYPT
	<b>JSPS Nairobi Research Station</b>	<a href="https://www.jspnairobi.org">https://www.jspnairobi.org</a> House Number 3, Windy Ridge Heights on L. R. No. 195/31 and 28, Off Dagoretti Road, 3D Lane, Karen, Nairobi, KENYA
	<b>JSPS Science Advisor in São Paulo</b>	<a href="https://www.jsp.go.jp/english/saopaulo/index.html">https://www.jsp.go.jp/english/saopaulo/index.html</a> Dr. Masato Nimomiya



JAPAN SOCIETY FOR THE PROMOTION OF SCIENCE

5-3-1 Kojimachi, Chiyoda-ku, Tokyo 102-0083

<https://www.jsp.go.jp/english/index.html>





# JSPS Postdoctoral Fellowships for Research in Japan

## Summer Program

### Purpose

To provide opportunities for pre- / post-doctoral researchers from the US, Canada and Europe to receive an orientation on Japanese culture and research systems and to pursue research under the guidance of host researchers in universities and other Japanese institutions.

**Duration of Fellowship** 2 months in summer

**Approximate Number of Fellowships Awarded** 100

### Fellow Eligibility

- Be a citizen or permanent resident of the UK, France, Germany, Canada, Sweden, and the US (Others with equivalent status may apply if approved by the nominating authority in one of the above countries.).
- Be enrolled in a university graduate program, or hold a doctorate degree received within the past 6 years.

## Short-term

### Purpose

To provide opportunities for pre- / post-doctoral researchers from the US, Canada and Europe to conduct, under the guidance of their hosts, cooperative research with leading research groups in universities and other Japanese institutions.

**Duration of Fellowship** 1 to 12 months

**Approximate Number of Fellowships Awarded** 140

### Fellow Eligibility

- Be a citizen or permanent resident of the US, Canada, European Union countries, UK, Switzerland, and Norway or Russia.
- Hold a doctorate degree received within the past 6 years, or be enrolled in a doctoral course and scheduled to receive a Ph.D. within 2 years.

## Standard

### Purpose

To provide opportunities for excellent postdoctoral researchers from other countries to conduct, under the guidance of their hosts, cooperative research with leading research groups in universities and other Japanese institutions.

**Duration of Fellowship** 12 to 24 months

**Approximate Number of Fellowships Awarded** 340

### Fellow Eligibility

- Be a citizen of a country that has diplomatic relations with Japan (SPS treats Taiwanese and Palestinian researchers in this manner.).
- Hold a doctorate degree received within the past 6 years, or be scheduled to receive a doctorate degree before the Fellowship goes into effect.

### Host Eligibility

Be a researcher who is employed full-time at a university or research institution.

### Terms of Award

- Round-trip air ticket
- Overseas travel insurance
- Maintenance allowance of ¥534,000
- Research support allowance of ¥158,500

### How to Apply

- Nomination through an overseas nominating authority (A call for proposals will not be issued to UK, and US researchers.)

### Terms of Award

- Round-trip air ticket
- Overseas travel insurance
- Monthly maintenance allowance Ph.D. holders: ¥362,000 Non-Ph.D. holders: ¥200,000
- Settling-in allowance of ¥200,000 (For 3 or more months of tenure)
- Research support allowance of up to ¥70,000 × the number of months of tenure

### How to Apply

- Application made by a host researcher through his/her institution in Japan
- Nomination through an overseas nominating authority (For the Short-term program, eligible countries are: US, UK, France, Germany, and Sweden).

### Terms of Award

- Round-trip air ticket
- Overseas travel insurance
- Monthly maintenance allowance of ¥362,000
- Settling-in allowance of ¥200,000
- Grant-in-Aid for JSPS Research Fellows (KAKENHI)

### How to Apply

- Application made by a host researcher through his/her institution in Japan
- Nomination through an overseas nominating authority (For the Short-term program, eligible countries are: US, UK, France, Germany, and Sweden).

### URL

<https://www.jsps.go.jp/english/e-fellow/index.html>



# JSPS Invitational Fellowships for Research in Japan

## Long-term

### Purpose

To invite overseas researchers with excellent records of research achievements to collaborate with Japanese colleagues in carrying out research through long-term visits.

**Duration of Fellowship** 2 to 10 months

**Approximate Number of Fellowships Awarded** 60

### Fellow Eligibility

- Be a citizen or a permanent resident of a country that has diplomatic relations with Japan (JSPS treats Taiwanese and Palestinian researchers in this manner). To be eligible, researchers of Japanese nationality residing overseas must have lived in other country for at least 10 years and been actively engaged in research in that country throughout the period.
- Be a researcher in a position equivalent to a university professor, associate professor or assistant professor in Japan, or received their doctorate degree prior to 6 years or more.

### Host Eligibility

Be a researcher who is employed full-time at a university or research institution.

### Terms of Award

- Round-trip air ticket
- Overseas travel insurance
- Monthly maintenance allowance of ¥387,600
- Research support allowance of up to ¥150,000

### How to Apply

- Application made by a host researcher through his/her institution in Japan

## Short-term

### Purpose

To invite overseas researchers with excellent records of research achievements for short-term visits to Japan and provide them opportunities for discussions, opinion exchanges, lectures, and other activities.

**Duration of Fellowship** 14 to 60 days

**Approximate Number of Fellowships Awarded** 160

### Fellow Eligibility

- Be a citizen or a permanent resident of a country that has diplomatic relations with Japan (JSPS treats Taiwanese and Palestinian researchers in this manner). To be eligible, researchers of Japanese nationality residing overseas must have lived in other country for at least 10 years and been actively engaged in research in that country throughout the period.
- Be a researcher in a position equivalent to a university professor, associate professor or assistant professor in Japan, or received their doctorate degree prior to 6 years or more.

### Host Eligibility

Be a researcher who is employed full-time at a university or research institution.

### Terms of Award

- Round-trip air ticket
- Overseas travel insurance
- Daily maintenance allowance of ¥18,000
- Research support allowance of up to ¥50,000

### How to Apply

- Application made by a host researcher through his/her institution in Japan

# BRIDGE Fellowship Program

## BRIDGE Fellowship Program

### Purpose

To provide opportunities for alumni members who have conducted research activities in Japan under JSPS programs to sustain, develop, and/or strengthen research collaborations with Japanese colleagues.

**Duration of Fellowship** 14 to 30 days

**Approximate Number of Fellowships Awarded** 50

### Fellow Eligibility

- Be a researcher who has experienced research in Japan under a JSPS program and who is currently a regular member of an officially recognized JSPS alumni association.
- Be a researcher who is employed as an active researcher working at a university or a research institute.
- Host researcher must agree to accept the Fellow.

### Host Eligibility

Be a researcher who is employed full-time at a university or research institution.

### Terms of Award

- Round-trip air ticket
- Overseas travel insurance
- Daily maintenance allowance of ¥13,000
- Research support allowance of up to ¥100,000

### How to Apply

- Nomination through the applicant's JSPS alumni association.

### URL

<https://www.jsp.go.jp/english/e-inv/index.html>

<https://www.jsp.go.jp/english/e-plaza/bridge/index.html>